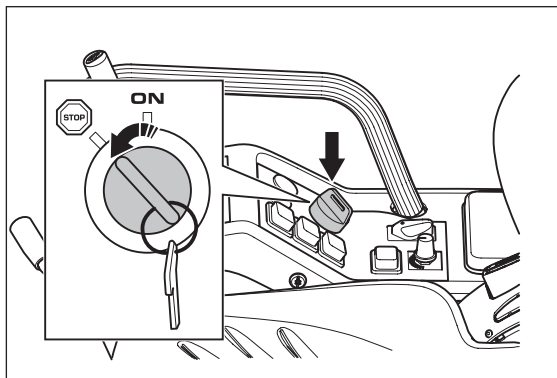


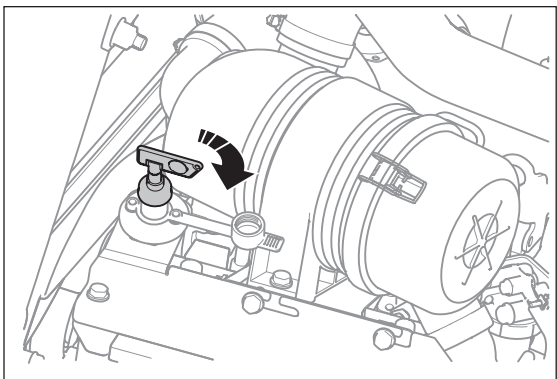
## Connection guide P535HX

### Display to HSH

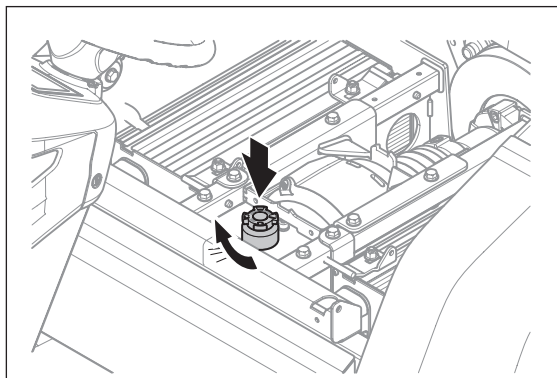
1. Set Power key in **STOP (OFF)** position



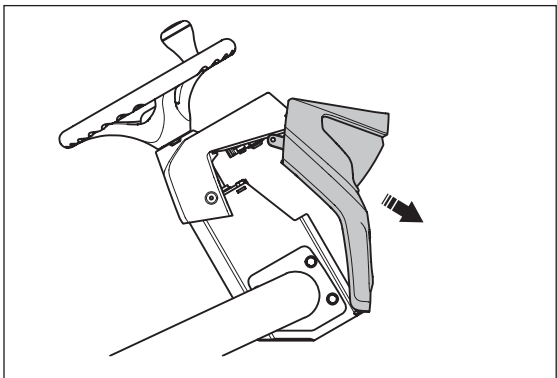
2. Push down and turn the main switch to the **ON** position



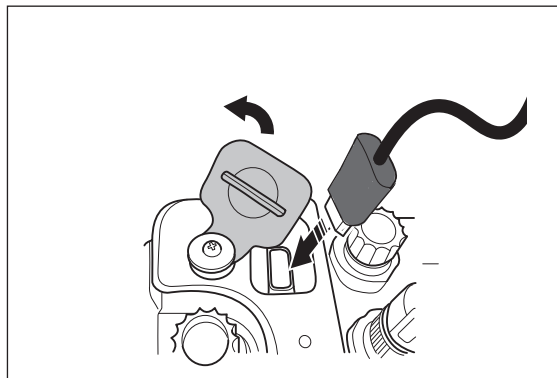
3. Make sure that 48V servicing plug are installed



4. Remove the cover of the steering column

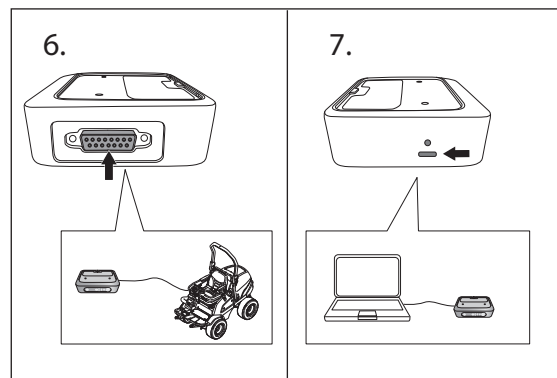


5. Move the rubber seal to side and connect the USB cable to the USB port on the Display

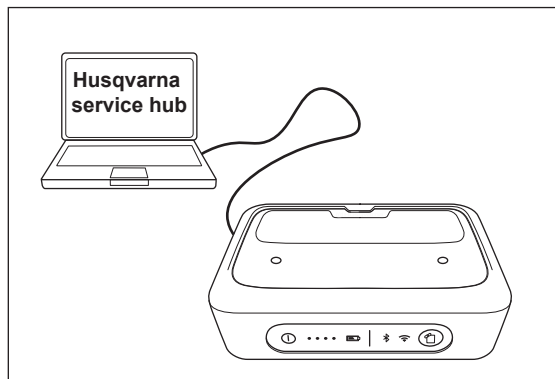


6. Connect the USB cable to the Husqvarna Service Interface Box

7. Connect the Husqvarna Service Interface Box to the computer



8. Start up the Husqvarna Service Hub program on the computer



9. Turn the Power key to **ON** position and follow further instructions in the Husqvarna Service Hub program

